

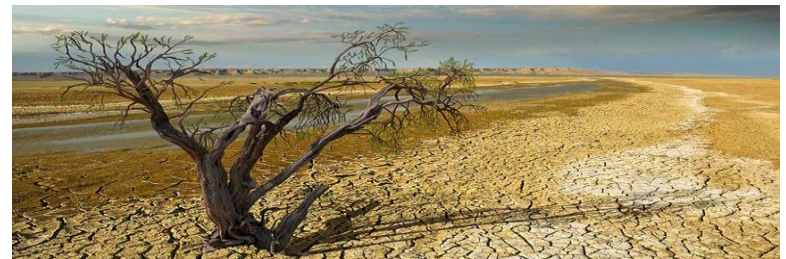
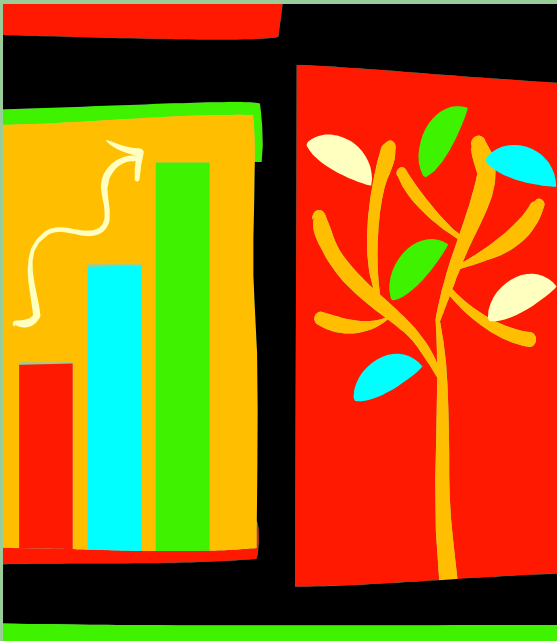


Little Tree Book

(Assess risk or hazard)

**Make your trees
healthy and safe**

By,
K.S.Venkatram
(AOEC, 2018)



Climate Change Mitigation and Adaptation (CCMA)



- **Tree Hazards Assessment Report (a checklist that is easy to understand and use)**
- 1. Is the tree drought tolerant? If no then this is a hazard as it needs sufficient water and soil enrichment.
- 2. Do many branches arise from one point of the trunk?
- 3. Is the tree sensitive to anything (question is arborist specific)? If yes, then review items 8 to 11.
- 4. Are there large dead branches?

Climate Change Mitigation and Adaptation (CCMA)



- 5. Are there detached large branches hanging from the tree?
- 6. Does the tree have cavities or rotten wood along the trunk or in major branches?
- 7. Are mushrooms present at the base of the tree?
- 8. Are there cracks or splits in the trunks or where the branches are attached?
- 9. Have any branches fallen from the tree?
- 10. Have adjacent trees fallen or died?

Climate Change Mitigation and Adaptation (CCMA)



- 11. Have the leaves developed a premature unusual color or size?
- 12. Have the roots been broken off or injured or damaged by lowering the nearby soil level, or by constructing or repairing pavements or sidewalks, or by digging trenches for telephone cables or sewer systems?
- 13. Has the location or site been changed recently by construction activity or by soil level changes or by installing of lawns or green strips?

Climate Change Mitigation and Adaptation (CCMA)



- 14. After stump removal was the hole filled with top soil before any new plantation? If no then the roots may not be healthy.
- If the answer is yes to any of the relevant questions, then the tree can be a hazard.
- A citizen, entity or civic body interested in registering a tree in the grid, will need to enter the following “Tree identification & configuration details” via a call to the Tree Health Desk, or submission of a hand-filled form, or use of a mobile application.



Tree Grid's Acknowledgement

- Finally a simple Thank You note to those citizens or entities who participate in the Tree Grid initiative could definitely help in making this endeavor more far reaching, impactful and socially accountable.





Little Preparedness can help

- The consultant's note - It is not too late to start off on a much needed CCMA initiative to respond to emerging threats, improve the health of trees in a location and thereon reduce the hazard posed by tree fall or branch collapse.
- Civic bodies will need SMART tools to bridge gaps and mitigate risks in a sustainable manner. Today's citizens could be needing this book, where it might make a difference easily to life, property and the environment.

DOP: 2017-2018