

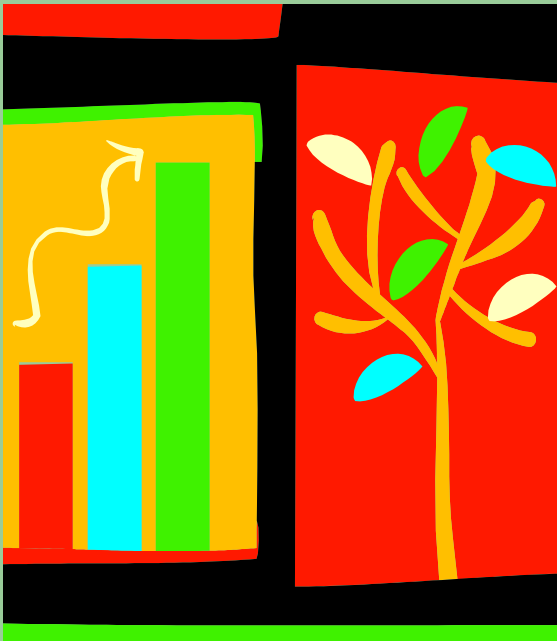


# Little Tree Book

(Tree Advisories)

**Make your trees  
healthy and safe**

By,  
K.S.Venkatram  
(AOEC, 2018)



# Helping out



- Tree Health Desk advisory (Will be notified by the Desk team)
- ( ) Trees cannot be planted in this region
- Details on restrictions:

# Helping out



- Tree Health Desk advisory (Will be notified by the Desk team)
- ( ) Permission required to plant trees in this region
- Details on precautions:

# Helping out



- Tree Health Desk advisory (Will be notified by the Desk team)
- ( ) Stay off nearby road/stretch/route/ring road at particular times
- Details on timings:
- ( ) Stay off nearby road/stretch/route/ring road in particular months
- Details on months:

# Helping out



- Tree Health Desk advisory (Will be notified by the Desk team)
- ( ) Recommend minimal utilization
- ( ) Restricted for goods carriers
- ( ) Restricted for heavy motor vehicles
- ( ) Restricted for autos
- ( ) Restricted for 2-wheelers
- ( ) Restricted for pollution accelerators
- ( ) Connects or connected to bad roads or problem afflicted routes

# Helping out



- Tree Health Desk advisory (Will be notified by the Desk team)
- ( ) Not to be used by Emergency Response vehicles (like ambulances, fire engines)
- ( ) Not to be used by Special Needs vehicles (like VIP convoys, on-mission security vehicles, hazardous content tankers, water tankers, school-or-college vans or buses)

# Helping out



- Tree Health Desk advisory (Will be notified by the Desk team)
- ( ) Not to be used by two wheelers or cyclists
- ( ) Not to be used by pedestrians





# Tree Grid's Acknowledgement

- Finally a simple Thank You note to those citizens or entities who participate in the Tree Grid initiative could definitely help in making this endeavor more far reaching, impactful and socially accountable.







# Little Preparedness can help

- The consultant's note - It is not too late to start off on a much needed CCMA initiative to respond to emerging threats, improve the health of trees in a location and thereon reduce the hazard posed by tree fall or branch collapse.
- Civic bodies will need SMART tools to bridge gaps and mitigate risks in a sustainable manner. Today's citizens could be needing this book, where it might make a difference easily to life, property and the environment.

**DOP: 2017-2018**